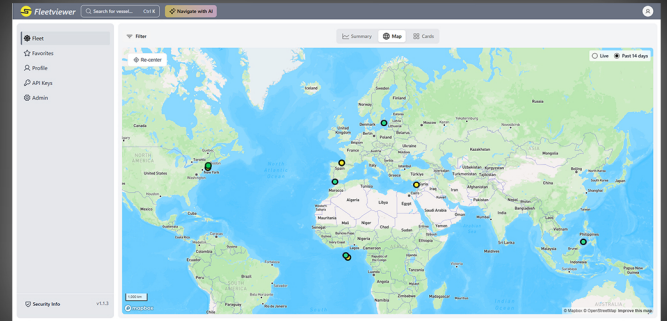


# YOUR FLEET, ONE VIEW

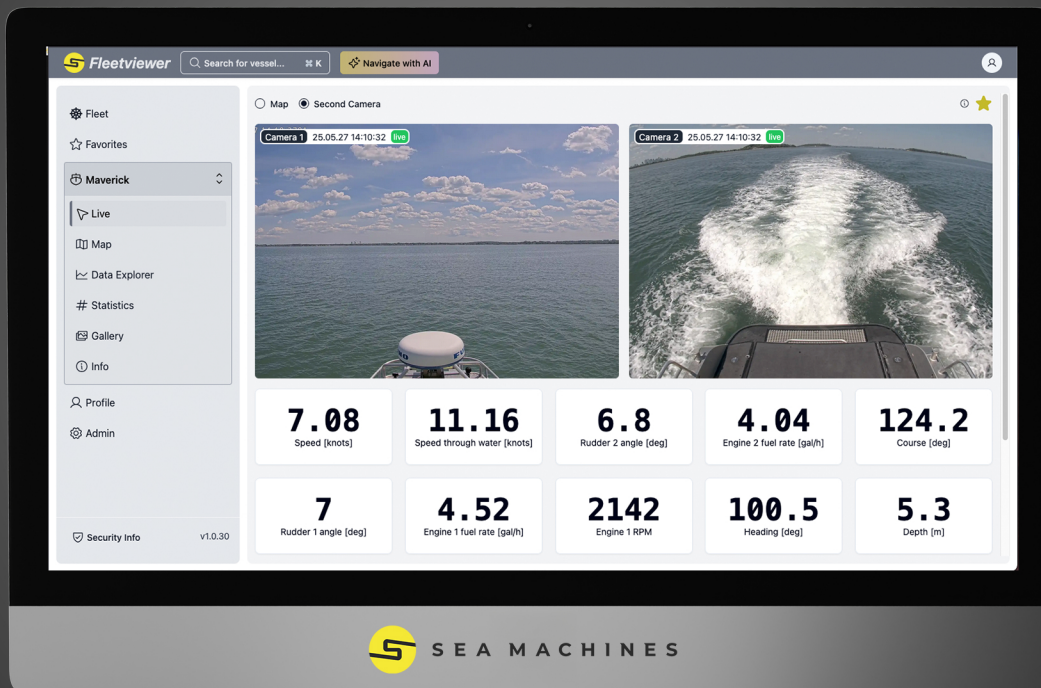
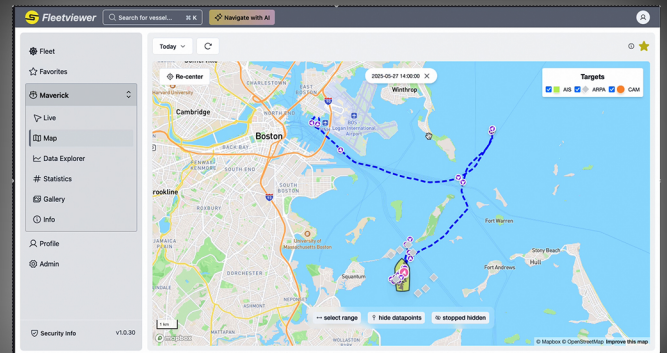
Browser-based platform for SM300-enabled vessels that delivers live and historical fleet data in one unified view.

See every detail of vessel behavior: navigation, mechanical, and situational - in real time.



## CAPABILITIES

- Track multiple vessels in real time
- View 100+ metrics per vessel: position, speed, heading, fuel burn, engine RPM, depth, AIS, radar, AI-ris contacts
- Query fleet data programmatically via API
- Export logs for reporting or analysis



SALES@SEA-MACHINES.COM

SEA-MACHINES.COM

# FLEETVIEWER

From Prop to Cloud: Total Fleet Visibility