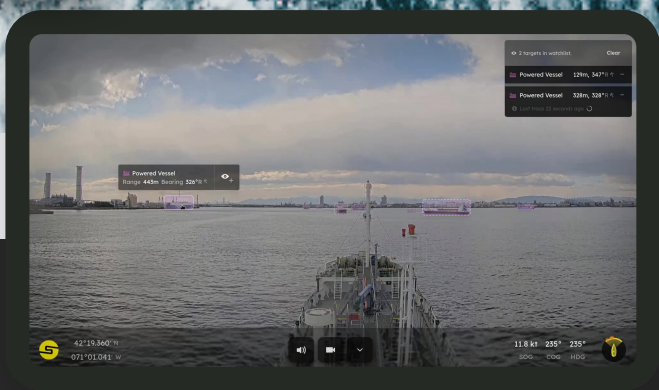


AI-ris

Artificial Intelligence -
Recognition and Identification System



For Safer Navigation



Enhanced situational awareness



Detects and tracks surface objects



Classifies and geolocates multiple object types



Over the air software updates



AI-ris

AI PROCESSING UNIT

Dimension	170.2 mm (6.96in) (W) x 360 mm (14.17in) (D) x 201.8 mm (7.96 in) (H)
Weight	5.8 kg (12.8lbs)
Mounting	Wall/Floor mount - damping brackets included
Operating Temp.	-25°C ~ 60°C (-13°F ~ 140°F)
Storage Temp.	-40°C ~ 85°C (-40°F ~ 185°F)
Vibration Rating	Operating, MIL-STD-810G, Method 514.6, Category 4
Shock Rating	Operating, MIL-STD-810G, Method 516.6, Procedure I, Table 516.6-II
Power Input	8-48 VDC input with Ignition Control, 24 V Nominal, 300W

CAMERA

Dimensions	Length: 360 mm (14.17 in) ø 157 mm (6.18 in)
Weight	2.55kg (5.3lb)
Environmental Rating	IP66/NEMA 4X-rated
Power Input	PoE IEEE 802.3at Type 2 Class 4 Typical 13.3 W, max 24.0 W
Storage Temp.	-40°C to 65°C (-40°F to 149°F)
Operating Temp.	-40 °C to 60 °C (-40°F to 140°F)
FOV	Horizontal: 90° Vertical: 49°
Resolution	4K (3840x2160)
Frame Rate	30 fps

FUNCTIONALITY

Capabilities	Detection Classification Geolocation Object Tracking
Four Levels of Classification	Powered Vessels Sailing Vessels Marine Mammals Miscellaneous Objects
Geolocation Capabilities	Relative Range Bearing

OTHER FEATURES

✓ Audible and visual alarms	✓ Vessel speed, course, and heading
✓ Watchlist	✓ GPS position
✓ Target range chart	✓ Video Recording
✓ Remote Viewer	✓ Low Light Mode

INSTALLATION SUPPORT

For new-build or retrofit applications, work with our qualified team and a network of installers to create a solution for your mission.



SEA MACHINES

Sea Machines Robotics, Inc.
226 Causeway Street | Boston, MA 02114 USA
© 2022 SEA MACHINES ROBOTICS, INC. All Rights Reserved.

sea-machines.com